

# 2016

## IMPORTANT DATES

**APRIL:** Deadline to apply for the College Program.

**MAY:** Interviews taking place in May for the College Program.

**JUNE:** Working hours for 2nd shift begin for the College Program.

FILL OUT AN  
APPLICATION AT

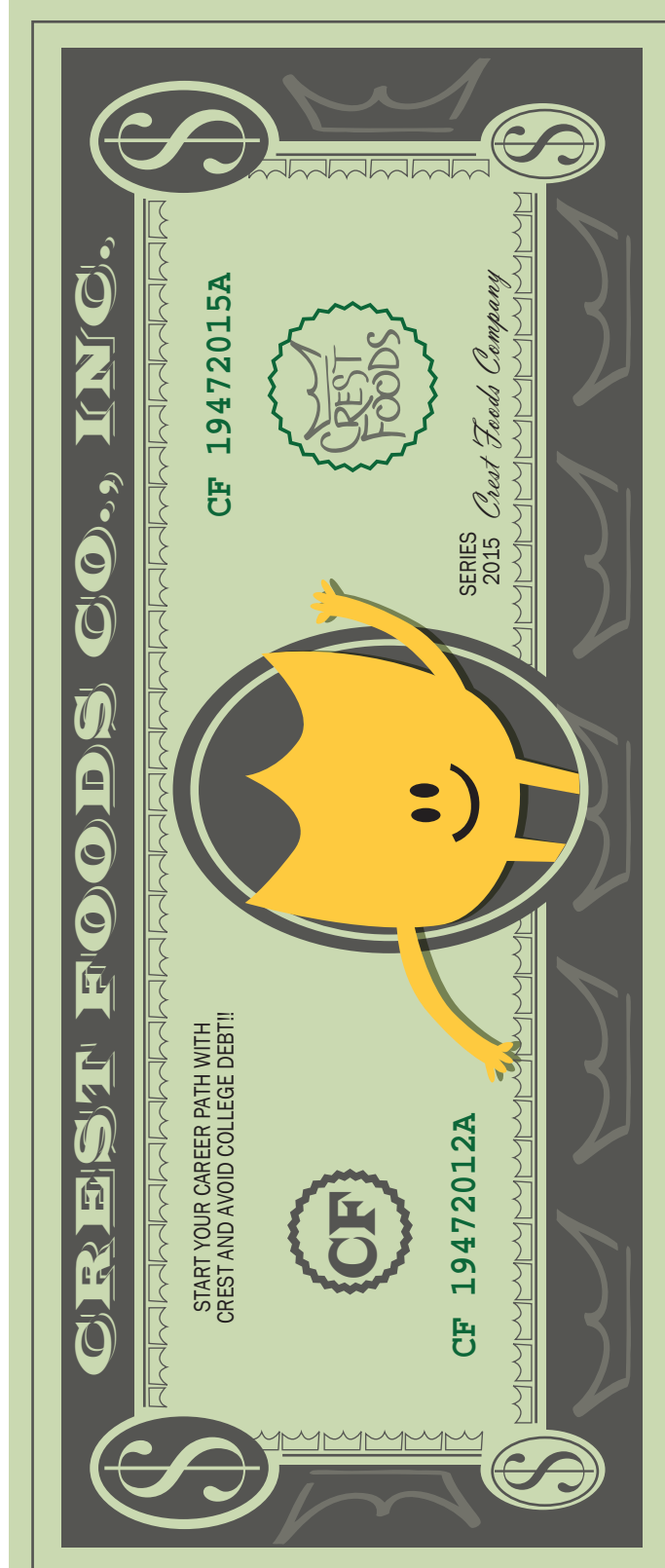
CREST  
FOODS



815.453.7411

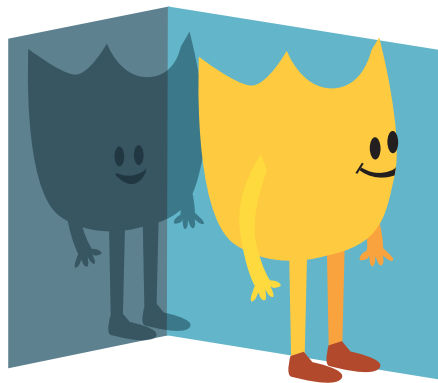
[www.crestfoods.com](http://www.crestfoods.com)

502 Brown Avenue | Ashton, IL 61006



## Join Our Team COLLEGE PROGRAM

Those accepted into the program will get their in-district tuition to a local community college paid for by Crest in exchange for working 3 nights a week on our B-Shift in Production for competitive wages. (Students going to NIU can apply for the program, but Crest will cover tuition based on Sauk's rates.)



## The Estimated Cost To Take Out a Student Loan

You already know college is expensive and student loan debt can follow you into your 20's and 30's. Here is an estimated breakdown using a student loan calculator online:

**\$5,000 loan amount**

**120 monthly payments (10 years)**

**6.8% Interest Rate**

**\$57.54 Monthly payment**

**\$1,904.81 total in interest**

## WE CAN HELP YOU SAVE SOME MONEY!

WHAT IF YOU DIDN'T EVEN HAVE TO  
TAKE OUT A STUDENT LOAN, AND COULD  
AVOID COLLEGE DEBT?

If you are accepted into the College Program, we can help cover any tuition costs (to a local community college). All you will have to pay for is your books & fees. PLUS, a job at Crest will help cover those costs.

## Exciting Things About The College Program

- In-District **TUITION** at a community college paid for each semester (excludes books & fees).
- **WORK** part-time during the school year, 3 nights a week on the B-Shift (3 pm-11:30 pm).
- **GUARANTEED** full-time summer job each year you are active in the program.
- **VACATION** & Personal days.
- **PAID** holidays & Annual **BONUS**.
- Fitness Center **ACCESS!**

**CONTACT US** !!

You can call Erika Meiners at  
815.453.7411, ext. 201  
or email [emeiners@crestfoods.com](mailto:emeiners@crestfoods.com).

You can also apply in person! Come to the  
502 Brown Avenue Main Plant office.

